

item number / EOL.CE.STC24.10

CERIAN Flexi LED COB strip lights 24VDC.

Application

residential or commercial indoor and outdoor space

Design Specifications

constant voltage 24Vdc, flexible LED strip (10W)

- High-density COB LEDs;
- Linear lighting, without light spot, soft and uniform luminance
- High CRI, high brightness and high efficiency;
- High temperature resistance, long life;
- Luminous surface width of 4.0±0.2mm;
- 3 years or 13,000 hours, whichever comes first.
- Suitable for indoor use as decorative lighting, such as corner decoration and contour lighting in KTV, shopping mall, cabinet and etc.



interior and outdoor used

Warm white- Cool white- red- green- blue

Performance

Led COB strip lights

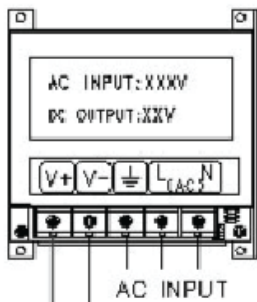
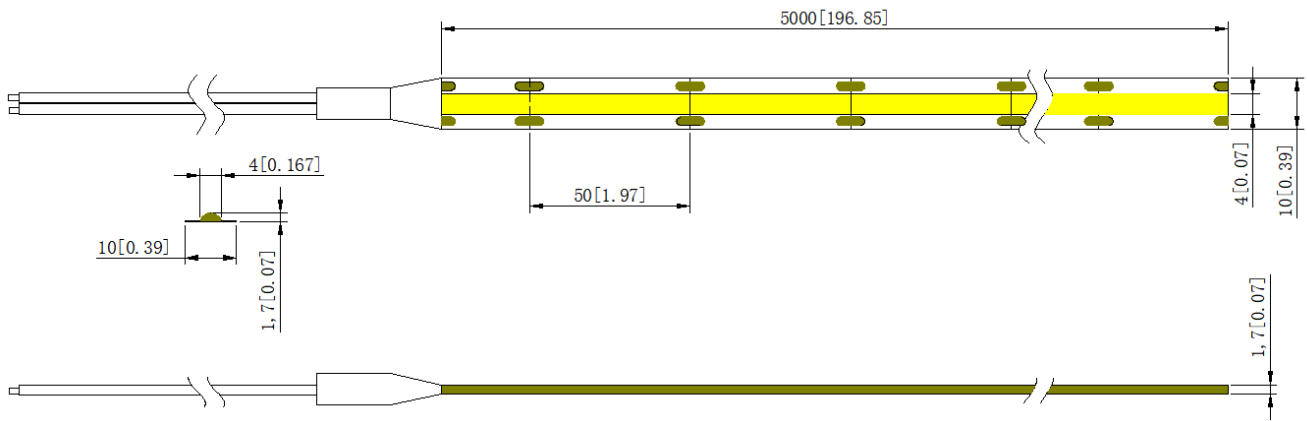
Technical Specification

Optical and Electrical Parameters:

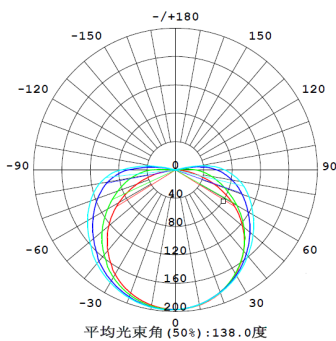
P/N	LED Color	(K)	I	SDCM	Beam Angle(°)	Luminous Flux (lm/m)	Luminous Efficacy (lm/w)	Working voltage (VDC)	Working current(mA)		Power (w)	
									1m	5m]	1m	5m]
EOL.CE.STC24.10-3.5K	white	3500	≥90	3	140	900	90	24	415	1666	10	40
EOL.CE.STC24.10-6.5k	white	6500	≥90	3	140	950	95	24	415	1666	10	40
EOL.CE.10.STC24.10-3.5k	white	3500	≥90	3	140	900	90	24	415	1666	10	40
EOL.CE.10.STC24.10-6.5k	white	6500	≥90	3	140	950	95	24	415	1666	10	40
EOL.CE.10STC24.10-3.5K IP	White	3500	≥90	3	140	900	90	24	415	1666	10	40
EOL.CE.10STC24.10-6.5K IP	White	6500K	≥90	3	140	950	95	24	415	1666	10	40

Optical and Electrical parameters

P/N	IP Grade	Operating Temp		Storage Temp		Standard cascading length		Max. cascading length		COB Qty (pcs/m)
		(°C)	(°F)	(°C)	(°F)	(m)	(inch)	(m)	(inch)	
EOL.CE.STC24.10 -3.5K	IP20	-25~ +60	-13~ +140	-25~ +70	-13~ +158	5	196.8	5	196.8	320
EOL.CE.STC24.10 -6.5k	IP20	-25~ +60	-13~ +140	-25~ +70	-13~ +158	5	196.8	5	196.8	320
EOL.CE.10.STC24 .10-3.5k	IP20	-25~ +60	-13~ +140	-25~ +70	-13~ +158	5	196.8	5	196.8	320
EOL.CE.10.STC24 .10-6.5k	IP20	-25~ +60	-13~ +140	-25~ +70	-13~ +158	5	196.8	5	196.8	320
EOL.CE.10STC24. 10-3.5K IP	IP20	-25~ +60	-13~ +140	-25~ +70	-13~ +158	5	196.8	5	196.8	320
EOL.CE.10STC24. 10-6.5K IP	IP65	-25~ +60	-13~ +140	-25~ +70	-13~ +158	5	196.8	5	196.8	320

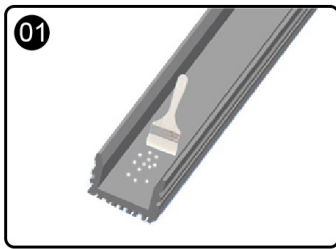


AC INPUT

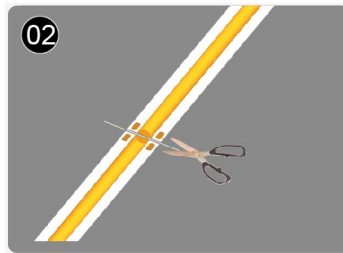


Dimensions

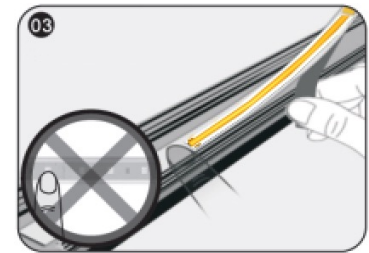
Packaging Information:											
P/N	Qty (m/reel)	Qty (m/carton)	Total Qty (m)	Total weight		Outer carton size					
				(kg)	(lb)	length		width		height	
						(mm)	(inch)	(mm)	(inch)	(mm)	(inch)
EOL.CE.STC24.10-3.5K	5	200	200	6.73	14.8	395	15.6	215	8.5	420	16.5
EOL.CE.STC24.10-6.5k	5	200	200	6.73	14.8	395	15.6	215	8.5	420	16.5
EOL.CE.10.STC24.10-3.5k	5	400	400	6.73	14.8	485	19.1	215	8.5	495	19.5
EOL.CE.10.STC24.10-6.5k	10	400	400	11.8	26	485	19.1	215	8.5	495	19.5
EOL.CE.10STC24.10-3.5K IP	10	400	400	13.6	29.9	485	19.1	215	8.5	495	19.5
EOL.CE.10STC24.10-6.5K IP	10	400	400	13.6	29.9	485	19.1	215	8.5	495	19.5



01 Clean the mounting surface



02 Calculate the needed length and cut off the extra length along cutting mark if necessary; if need to add wires, please weld them at the next location with printed mark.



03 While sticking strips, peel off the release paper of the tape step by step. Don't peel off all release paper at one time to avoid getting your strip in a mess.
△Notes: No pressing the LED bead!

Declaration:

- If the external flexible cable of light box is damaged, please replace it by its manufacturer or its service agent or qualified person to avoid a hazard.
- The specific installation and cautions please refer to the user manual.
- The given data in this specification is based on our standard product. There may be existed slight difference compared with actual products.
- All Illustrations in this specification are for reference only.
- This product is subject to change or modify without prior notice.
- EMPIRE OF LIGHT PTY LTD reserves the right of final explanation for this specification.